

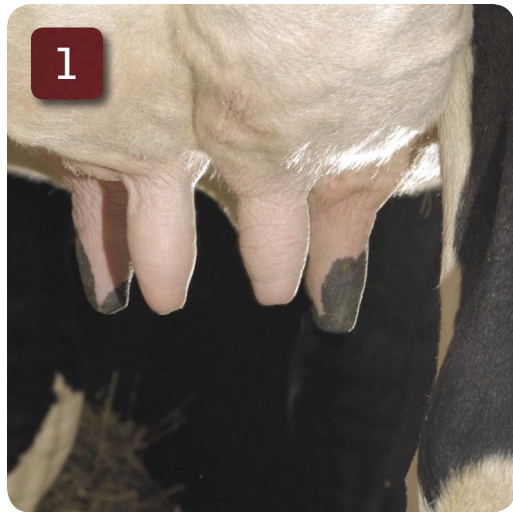
HOW TO USE ORBESEAL

When managing dry cows, correct procedures must be followed to prevent mastitis infections. At all times, dry cow materials should be kept away or shielded from possible fecal/urine contamination. Disposable gloves should be worn during the disinfection process. OrbeSeal® should be stored at room

temperature (60°-85°F, 15°-30°C). If OrbeSeal becomes difficult to administer in extremely cold weather, it should be warmed to room temperature. Individual tubes should not be immersed in water. The OrbeSeal bucket can be lowered into a five-gallon bucket filled with warm water to warm the tubes.



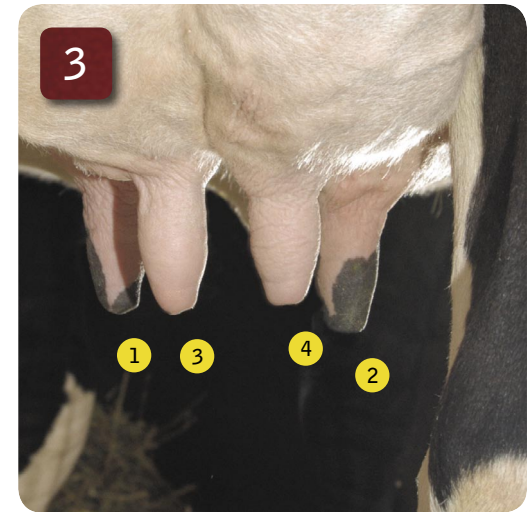
AFTER USING YOUR CURRENT DRY COW TREATMENT PROGRAM, PERFORM THE FOLLOWING STEPS:



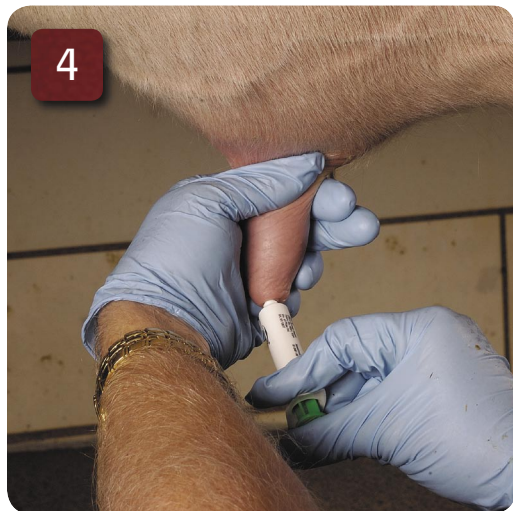
Teats should be clean and dry. If teats are not clean, CAREFULLY wash and dry them prior to disinfection.



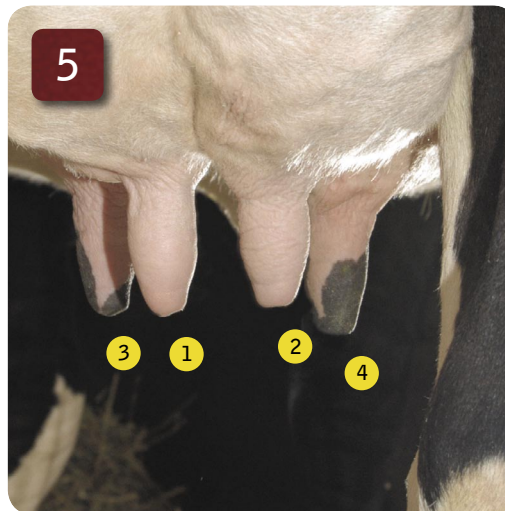
Using an alcohol pad, physically clean the end of the teat to remove any contaminated skin, dirt or manure. Repeat until the pad remains clean.



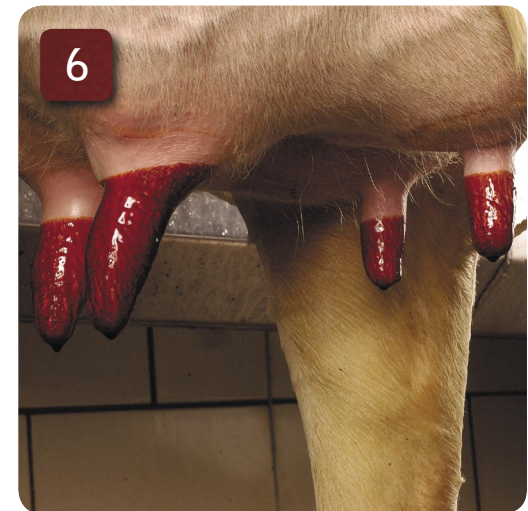
Disinfect the far teats before the near teats to avoid accidental contamination of previously disinfected teats.



Insert the OrbeSeal syringe nozzle into the teat canal, grasp the base of the teat near the udder attachment with two fingers pressed firmly together and **slowly** inject all contents. Use one complete syringe per quarter. Do not massage. OrbeSeal must remain in the teat canal to be effective.



Insert OrbeSeal into the nearest teats first to minimize contamination of teats that have not been treated.

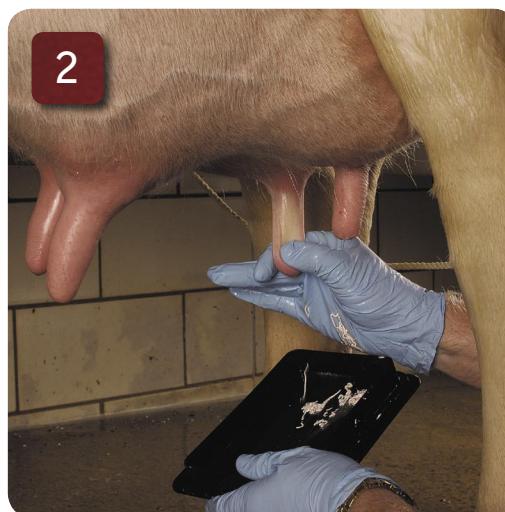


After inserting OrbeSeal, mark the cow so others can tell she has been dried off. Then dip each teat with a quality teat dip.

TO REMOVE ORBESEAL, PERFORM THE FOLLOWING STEPS:



To effectively strip OrbeSeal, be sure to grab the top of the teat—where it meets the udder—and work all the way down. Don't grab the middle of the teat, squeeze, and work down. This will only clear the bottom half of the teat. Strip the entire quarter by starting at the top and working all the way down.



Strip aggressively—10 to 12 times per quarter—for the first 4 days post-freshening. This helps to ensure that you're removing the plug and all OrbeSeal particles. **Do not remove OrbeSeal by action of the milking machine.**



Milk into a bucket for the first 3 to 4 days post-freshening. This will help to remove any remaining OrbeSeal particles.

OrbeSeal requires no milk or preslaughter withdrawal. If OrbeSeal is used in conjunction with a dry cow mastitis treatment program, follow the labeled withdrawal period of the antibiotic. Ask your veterinarian or Pfizer representative for more information.

PREVENT NEW INFECTIONS, NATURALLY™



Pfizer Animal Health

©2004 Pfizer Inc. OrbeSeal is a registered trademark and Prevent New Infections, Naturally is a trademark of Pfizer Inc. ORB04018

