

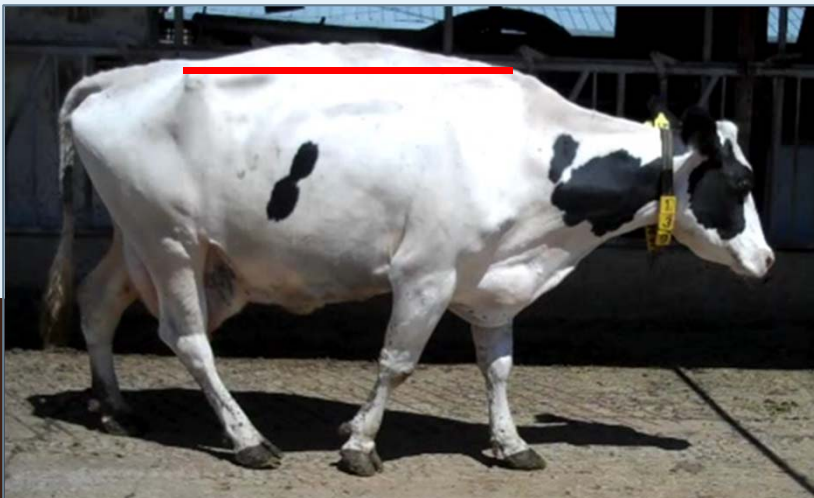
FIND LAME COWS FAST!

LAME COWS:

- ✓ Produce less milk
- ✓ Take more time to breed back
- ✓ Move slowly to the parlor
- ✓ Are in pain!

Look for early signs of lameness:

#1: Back arch: Lame cows have an arched back when they stand and walk



No short step



Short step

#2: Short Step: Cows with a foot problem don't move their back foot as far forward as normal cows, and they may move one foot faster than the other

Back arch + Short step = LAME COW
Limping = LAME COW

IF YOU SEE A LAME COW:
